

Figure S1. PCoA biplot of Bray-Curtis dissimilarity for PB set in KG\_long core



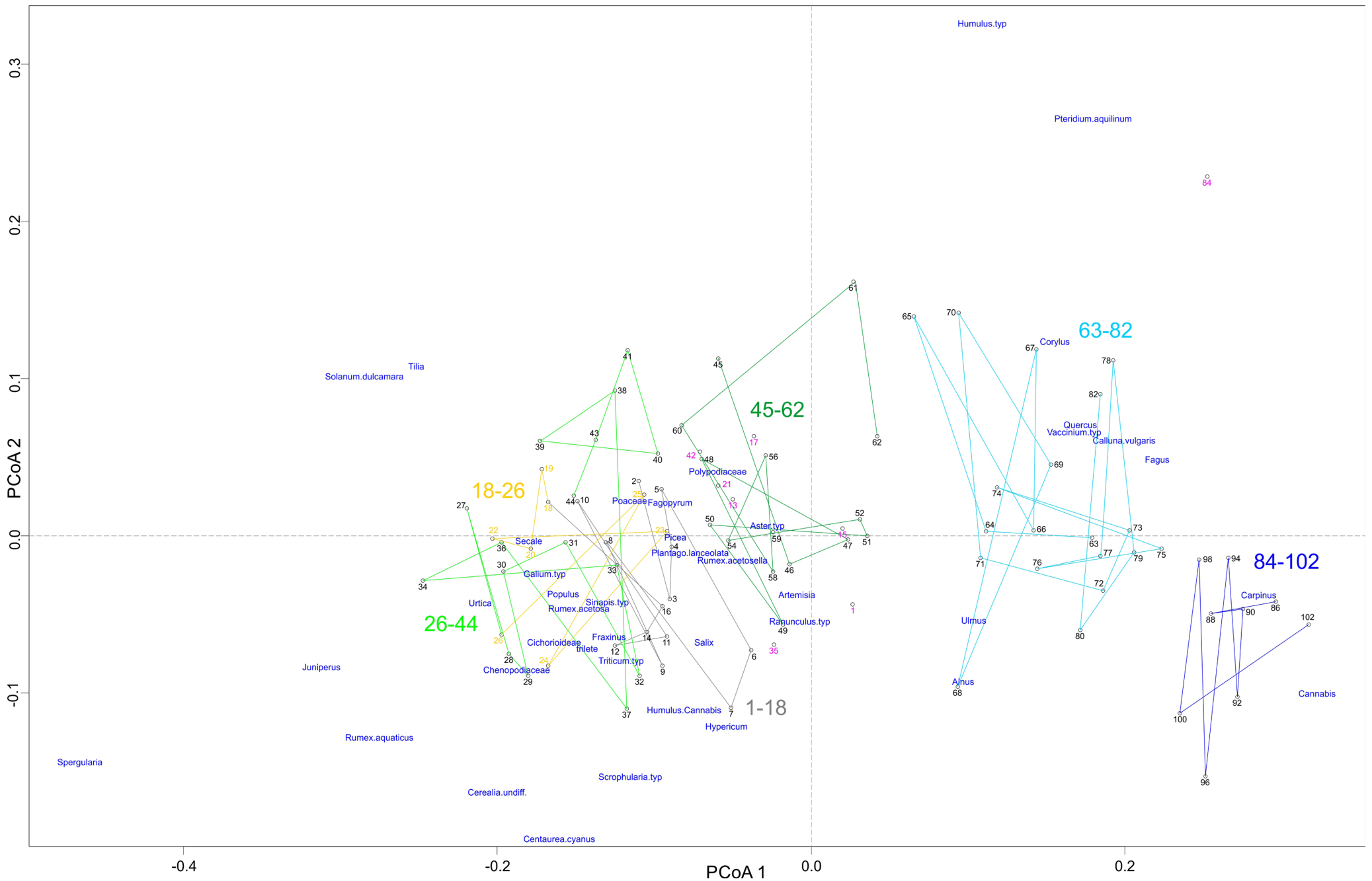


Figure S3. PCoA biplot of Bray-Curtis dissimilarity for PB set in KG\_short core

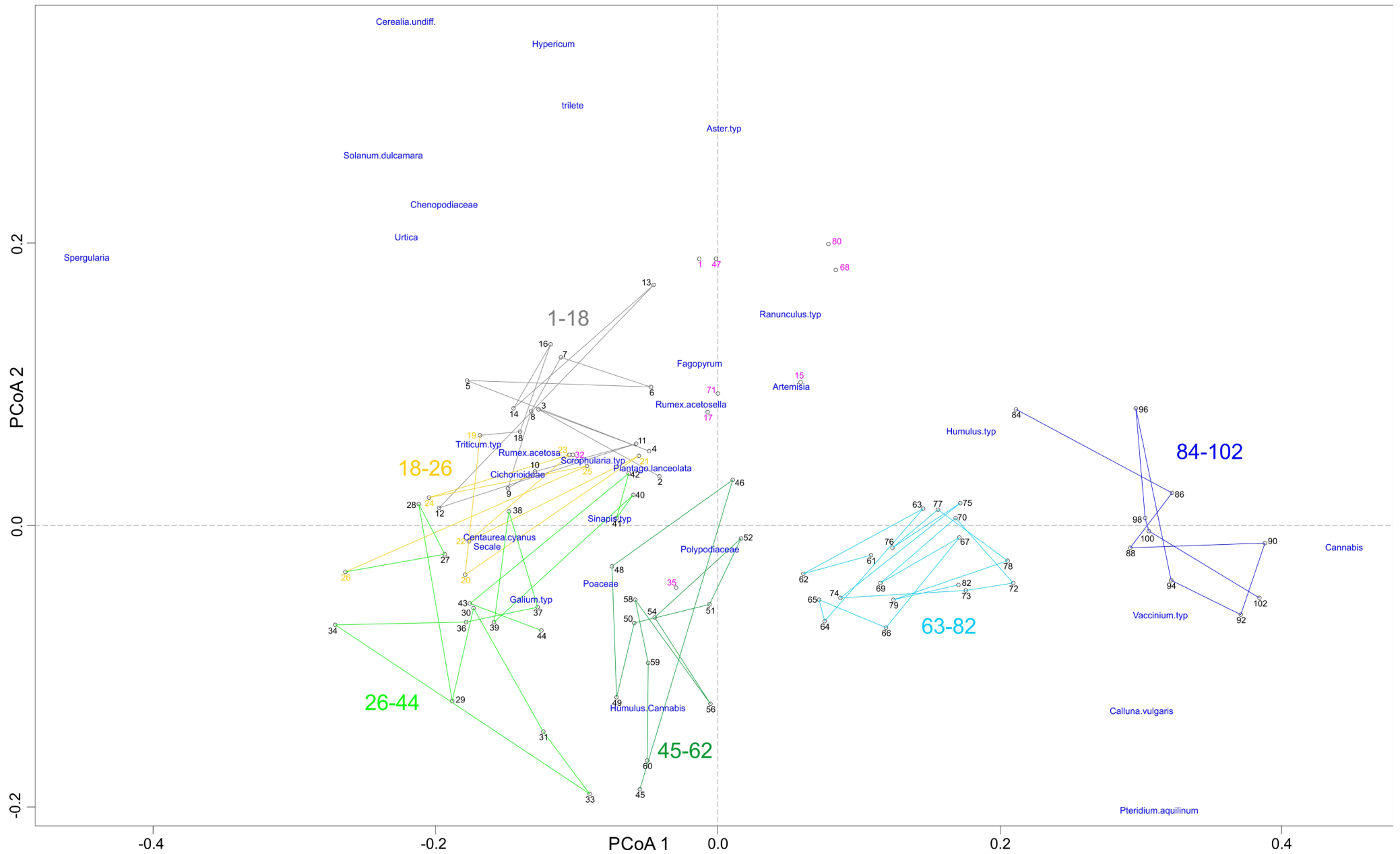


Figure S4. PCoA biplot of Bray-Curtis dissimilarity for NAP set in KG\_short core



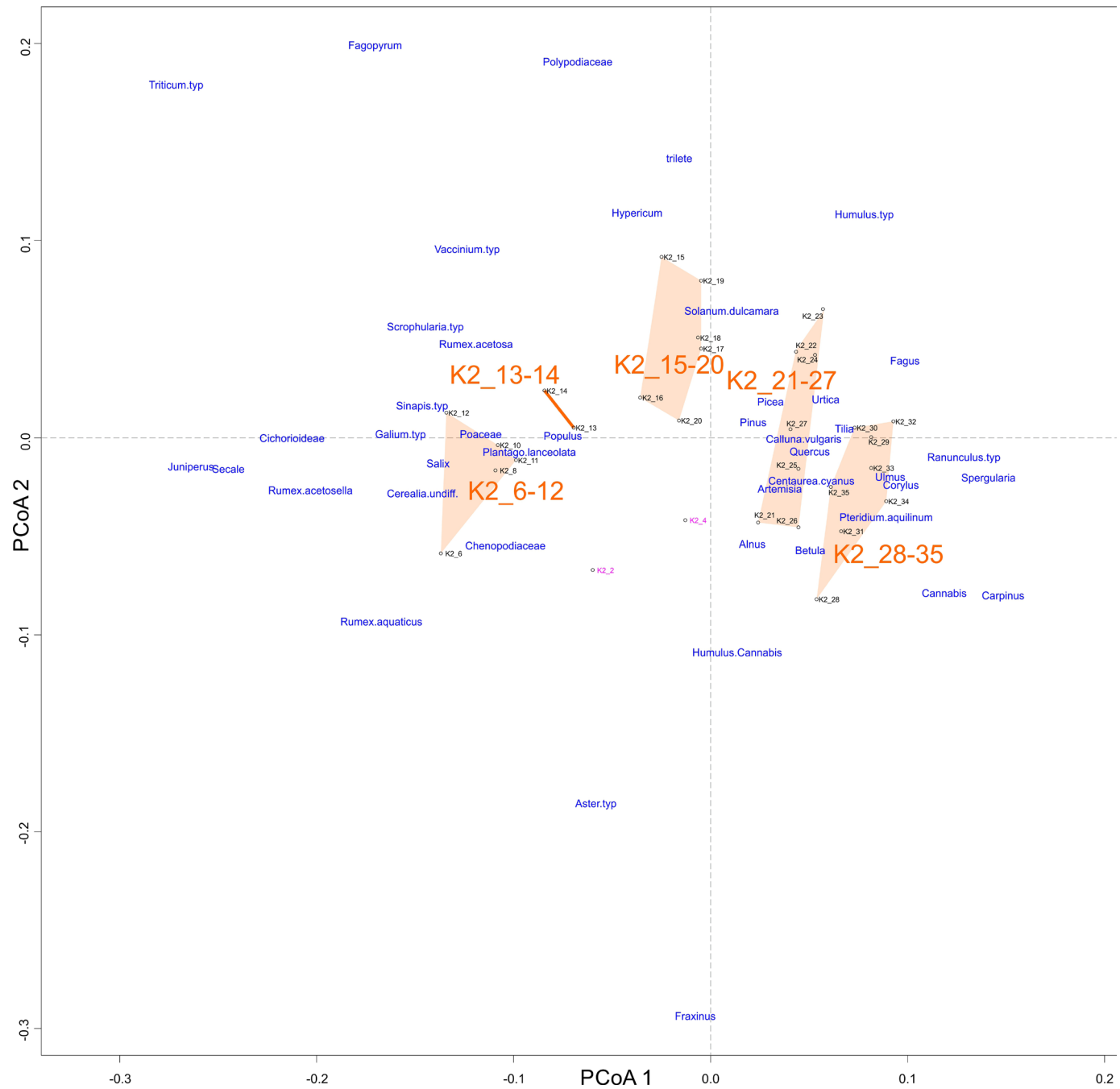


Figure S6. PCoA biplot of Bray-Curtis dissimilarity for ALL set in K2 core



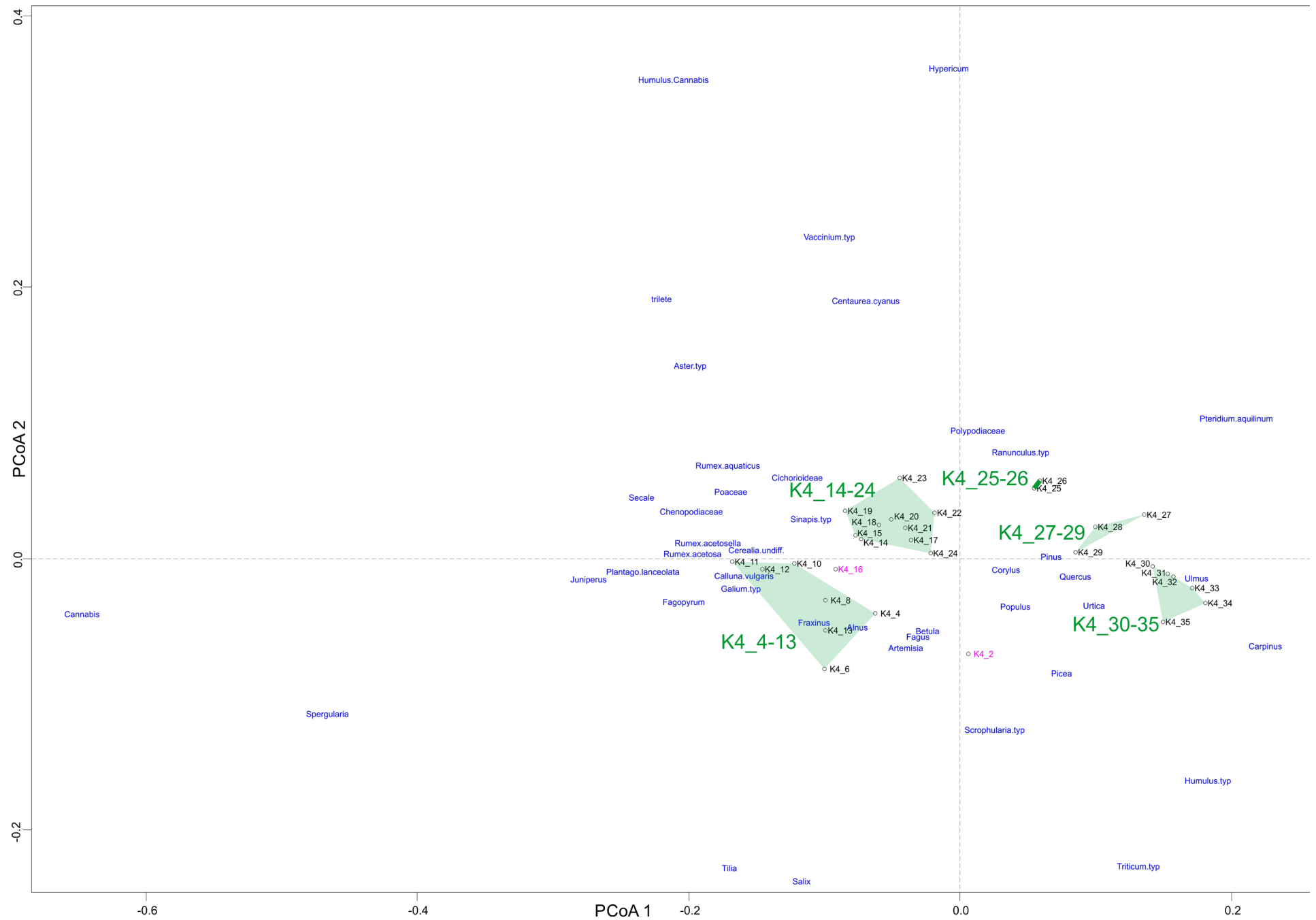


Figure S8. PCoA biplot of Bray-Curtis dissimilarity for ALL set in K4 core



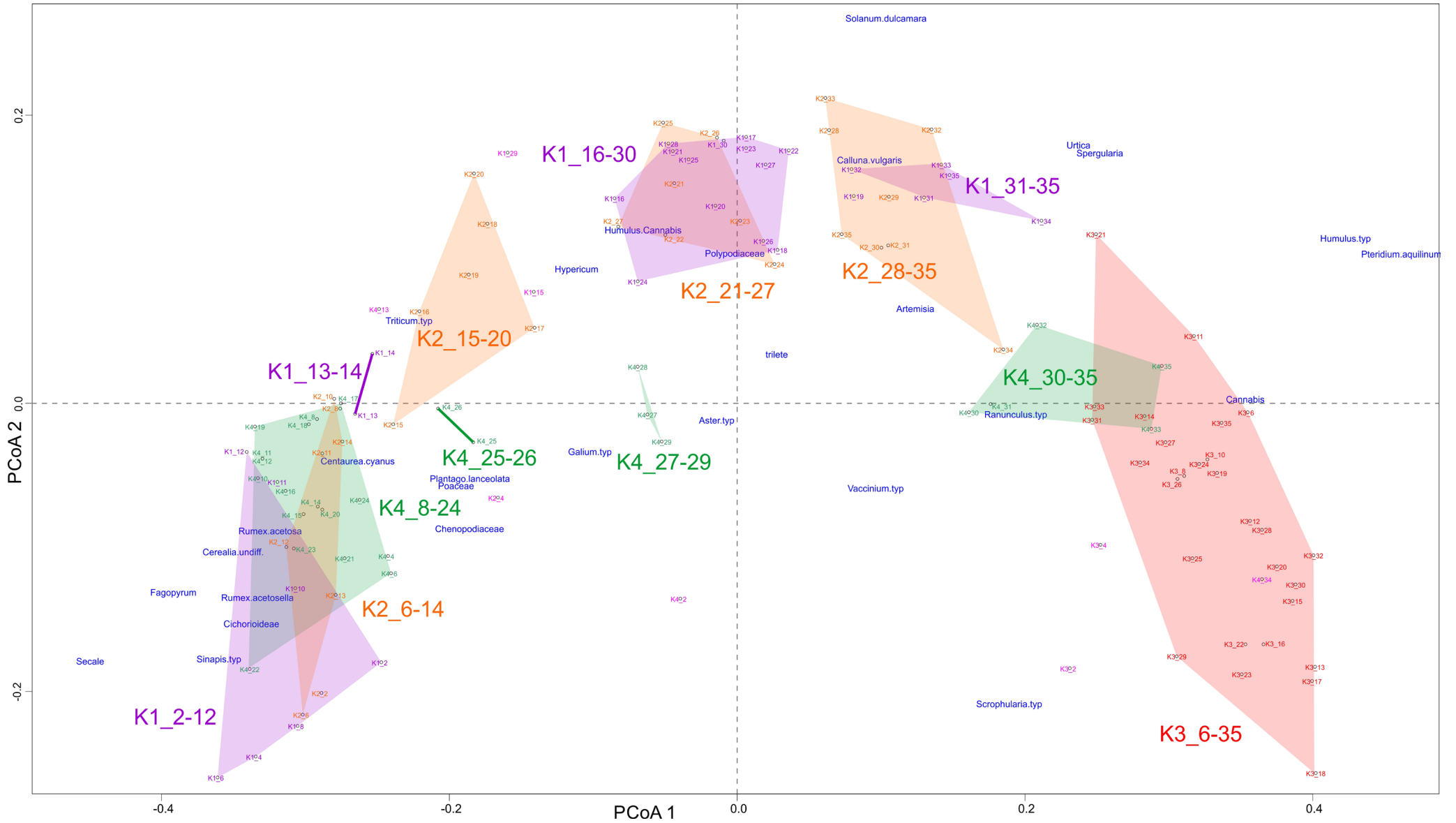


Figure S10. PCoA biplot of Bray-Curtis dissimilarity for NAP set in K1-K4 cores

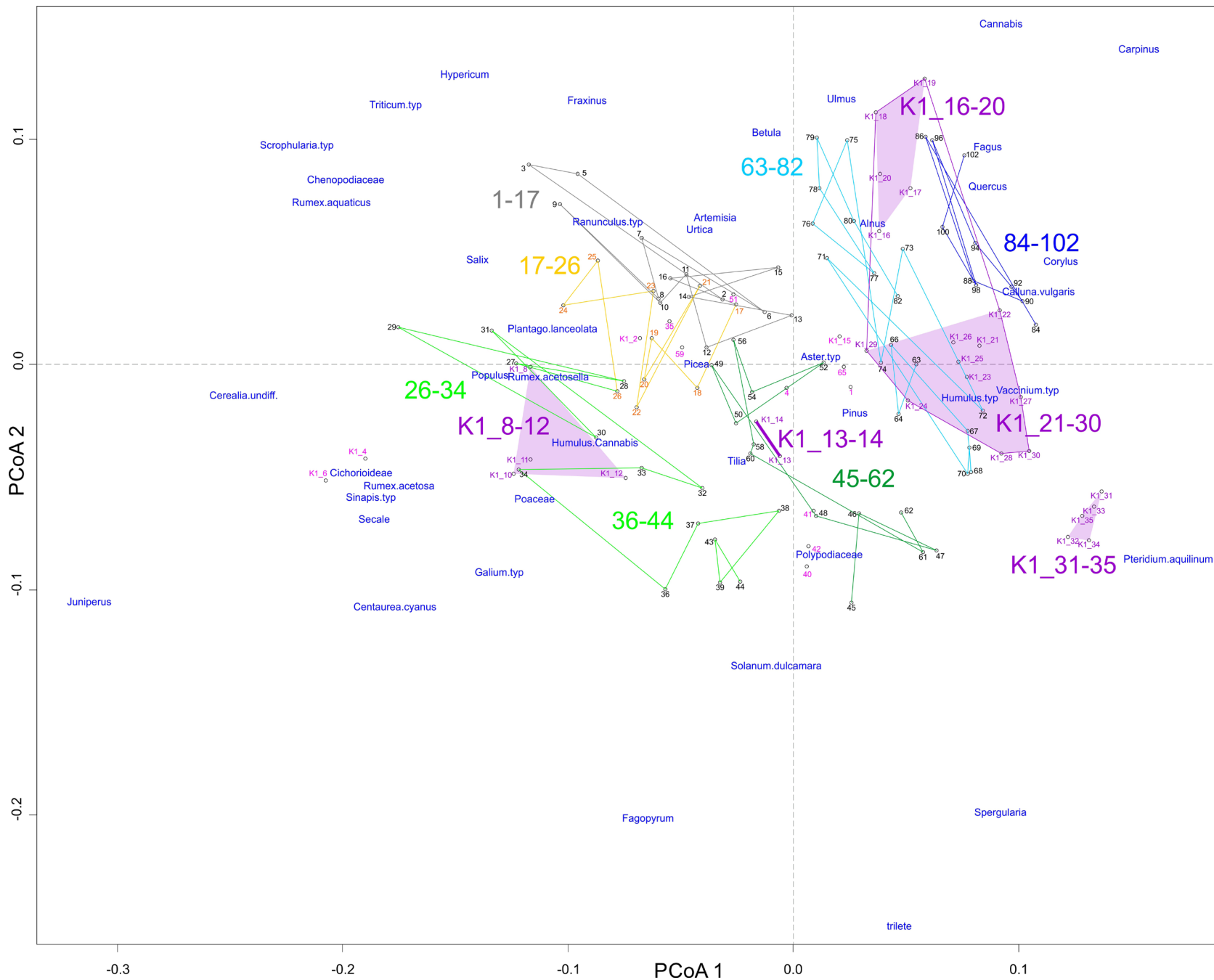


Figure S11. PCoA biplot of Bray–Curtis dissimilarity for ALL set in cores KG\_short & K1



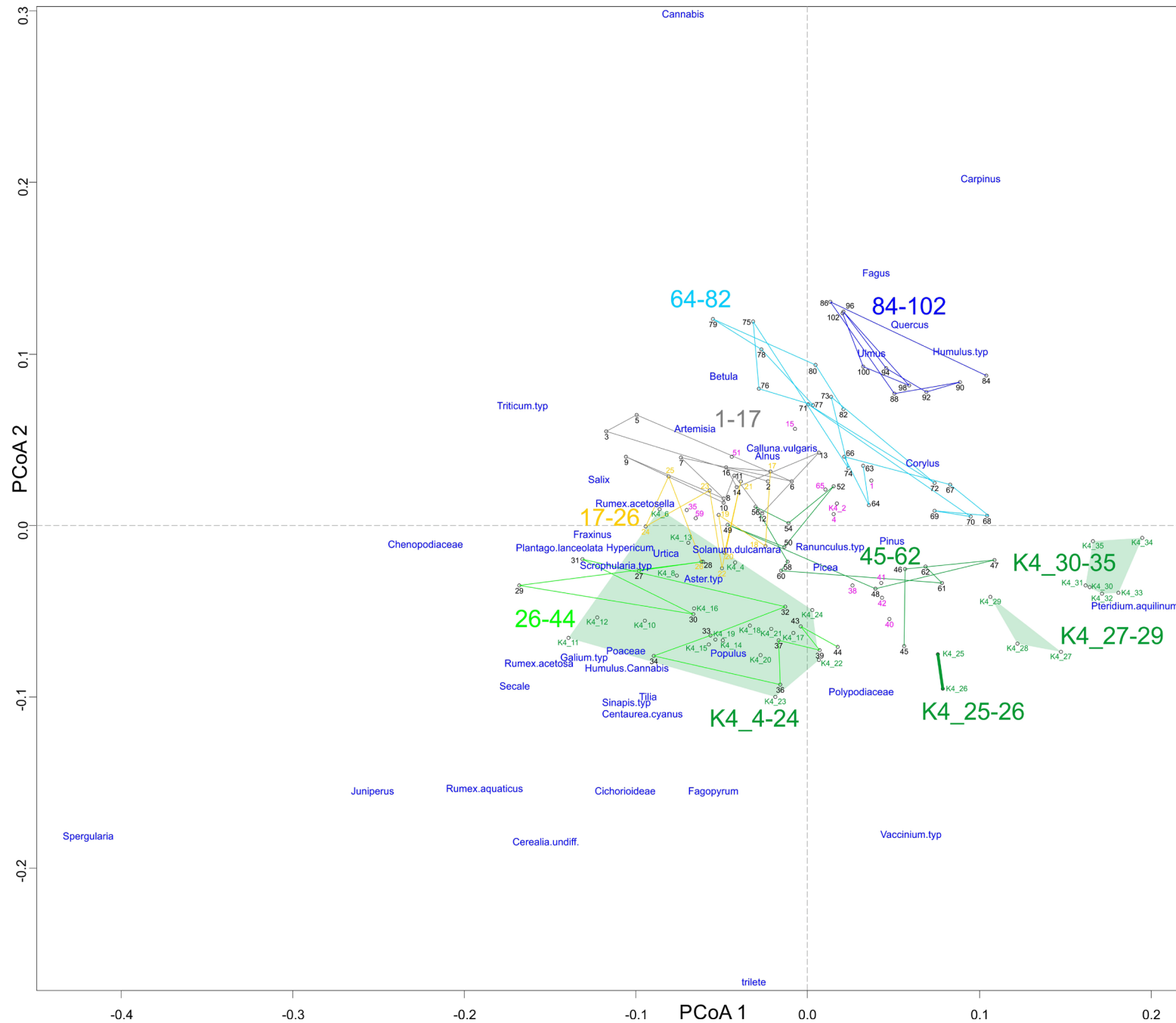


Figure S13. PCoA biplot of Bray–Curtis dissimilarity for ALL set in cores KG\_short & K4

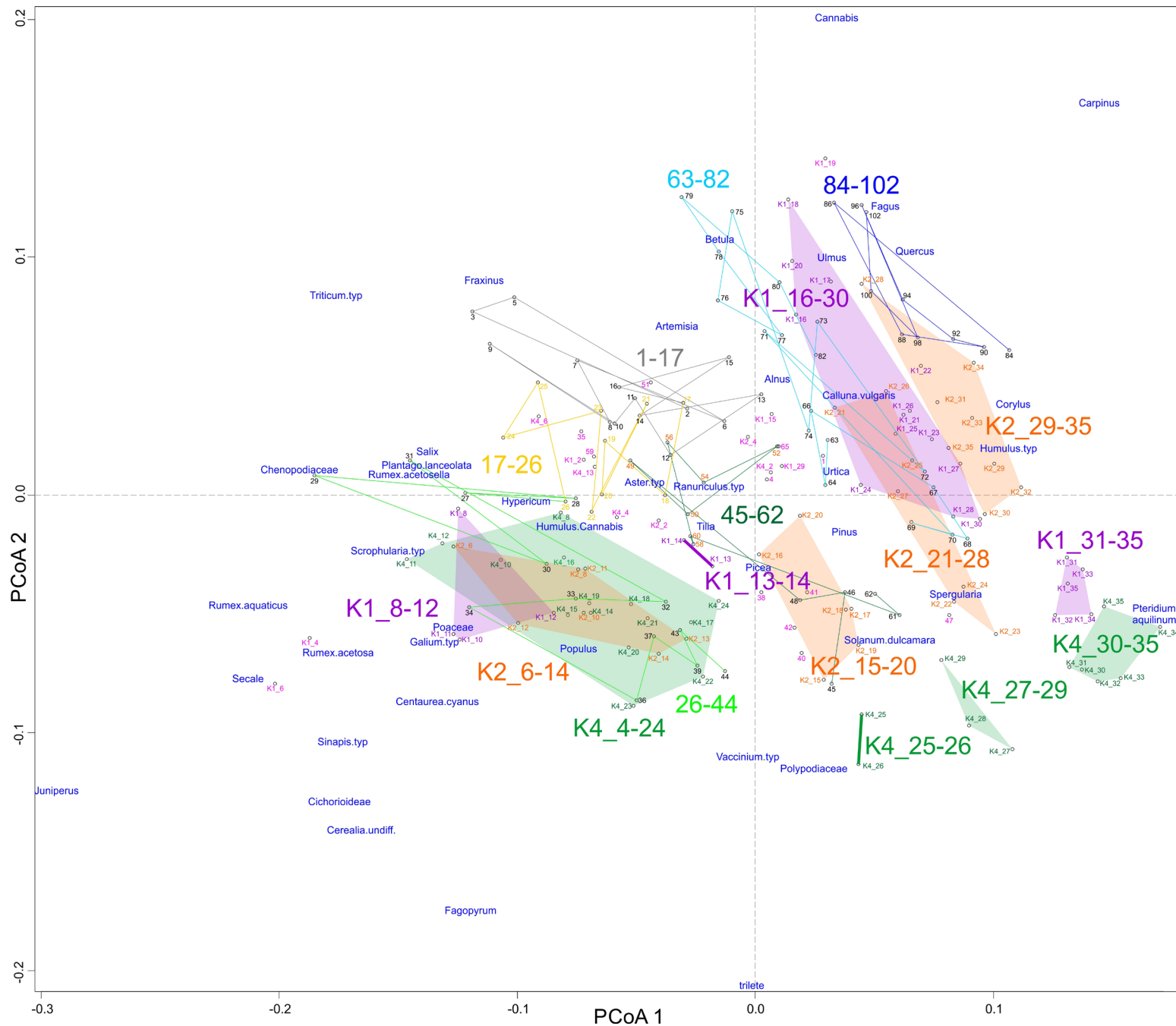


Figure S14. PCoA biplot of Bray–Curtis dissimilarity for ALL set in cores KG\_short & K1,K2,K4





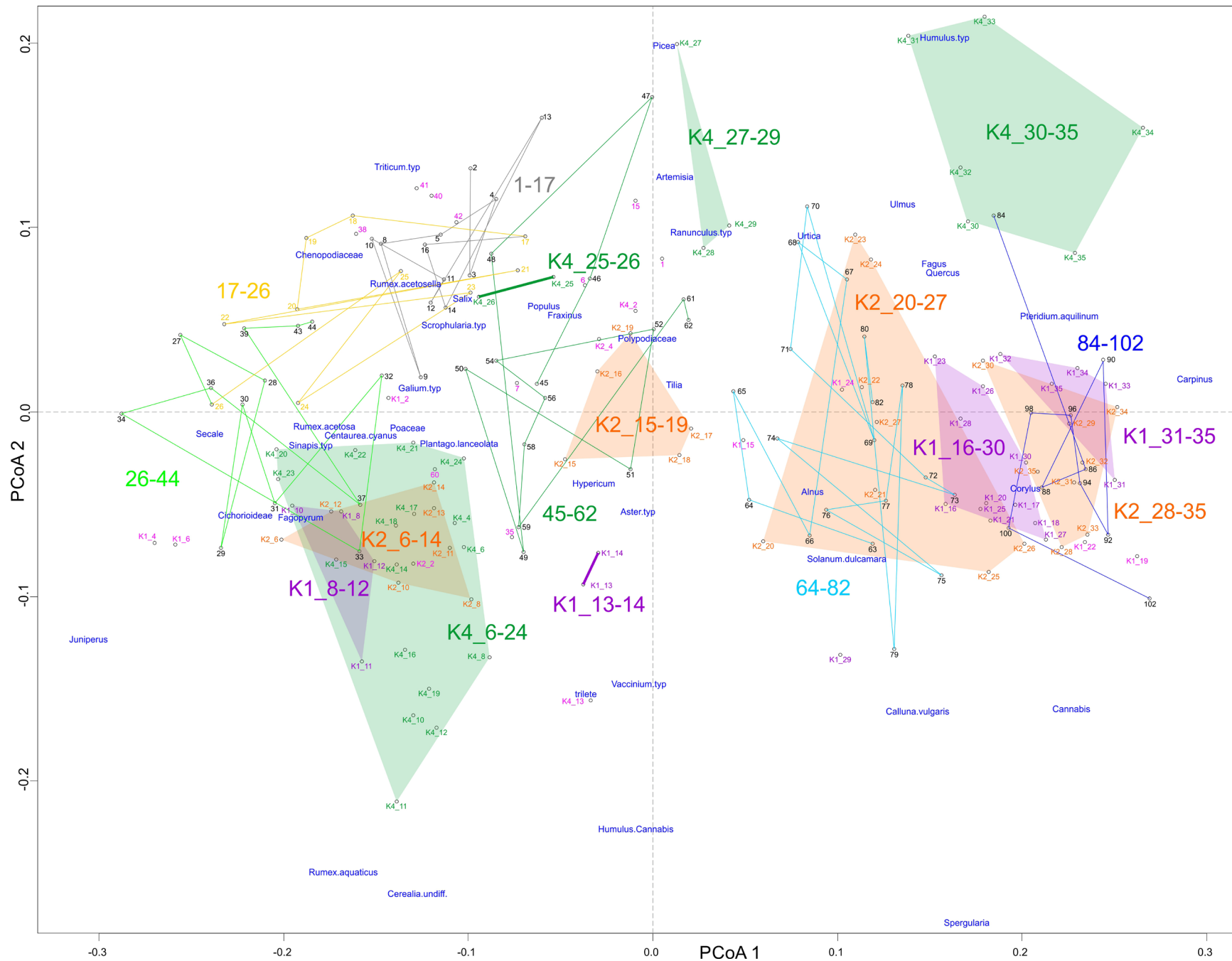


Figure S17. PCoA biplot of Bray–Curtis dissimilarity for PB set in cores KG\_short & K1,K2,K4





